

SR-700L

ROUGH TERRAIN CRANE

【SPECIFICATION】

■ CRANE Specification

Maximum lifting capacity	70ton × 2.5m	
Boom length	10.0m — 44.5m (6 section)	
Fly jib length	8.3m—13.2m (2 section, offset 7° — 60°)	
Maximum rated lifting height	45.5m (Boom) 58.6m (jib)	
Hoisting line speed (winch up)	Main winch	160m / min. (at 5th layer)
	Auxiliary winch	150m / min. (at 4th layer)
Hoisting hook speed (winch up)	Main winch	(Parts of line; 16) : 10m / min. (at 5th layer)
	Auxiliary winch	(Parts of line; 1) : 150m / min. (at 4th layer)
Boom derricking angle	0° — 84°	
Boom derricking time	66sec / (0° — 84°)	
Boom extending speed	135sec (10.0m — 44.5m)	
Slewing speed	1.8min ⁻¹	
Tail slewing radius	3,550mm	

● Equipment and structure

Boom type	Box-shaped, 6-section hydraulically telescopic type (Boom section 2 / 3, 4 / 5 / 6 simultaneously operated)	
Jib type	2 sections (2nd section of hydraulically telescopic type) (offset angles 7° — 60°)	
Boom extension/retraction equipment	Three hydraulic cylinders and wire ropes used together	
Boom derricking/lowering equipment	Two hydraulic cylinders of direct acting type with pressure-compensated flow control valve	
Winch system Main & Auxiliary winches	Driven by axial plunger type hoisting motor through planetary gear reduction. Controlled independently by respective operating lever. Equipped with automatic brake.	
Slewing equipment	Ball bearing type	
Outriggers	Type	Hydraulic H-beam type (with float and vertical cylinder in single unit)
	Extension width	7,600mm (Fully extended)
		7,200mm (Intermediately extended)
		6,500mm (Intermediately extended)
		5,400mm (Intermediately extended)
		4,300mm (Intermediately extended)
2,690mm (Fully retracted)		
Wire rope for hoisting	Main winch	Diameter: 18mm × Length: 240m
	Auxiliary winch	Diameter: 18mm × Length: 125m

● Hydraulic equipment

Oil pump	4 pumps, plunger type	
Hydraulic motor	Hoisting motor	Axial plunger type
	Slewing motor	Axial plunger type
Control valve	Double acting with integral check and relief valves	
Cylinder	Double acting type	
Oil reservoir capacity	740L	

● Safety devices

	ACS (Automatic Crane System with voice alarm), Slewing automatic stop system, Boom raise / lower dampening function, Boom extension / retraction dampening function, Outrigger status detector, Boom derricking / telescoping holding valve, Overhoist prevention device, Drum lock device (on aux. winch), Winch holding valve, Automatic winch brake, Winch drum roller, Hydraulic safety valves, Outrigger lock pins, Slewing lock, Joystick control safety stop system, Hydraulic oil temperature warning device, Hydraulic oil return filter warning device
--	--

● Standard equipment

	Hydraulic oil cooler, Working light (on boom, table and cab), Winch drum turning indication device, Hook for 34 ton, Hook for 5ton
--	--

● Operator's cab

	All steel welded construction, 1 person, Rubber mounted, Adjustable steering wheel, Adjustable seat, Seat belt, Front windscreen wiper & washer (2 speed wiper), Roof window wiper & washer, Cigarette lighter, Ashtray, Floor mat
--	--

● Optional equipment

	Winch view camera, Hook for 70 / 48 ton, Slewing warning buzzer, Winch over unwinding device, Cab heater, Cab cooler, Fan, AM/FM Radio, Fire extinguisher, ACS outside indicator
--	--

■ CARRIER Specification

Maximum traveling speed	49km/h
Gradeability (tan θ)	60% (computed at G.V.W. = 39,750kg)
Minimum turning radius (center of extreme outer tire)	11.2m (2 wheel steer)
	6.44m (4 wheel steer)

● Engine

Model	Mitsubishi 6D24-TLE2A
Type	4 cycle, 6 cylinders, water cooled, direct injection turbo-charged diesel engine with intercooling
Piston displacement	11.945L
Max. power	257kW at 2,200min ⁻¹
Max. torque	1,275N·m at 1,500min ⁻¹
Fuel due to KATO's recommendation only	

● Equipment and structure

Drive system	4 × 4	
Torque converter	Engine mounted 3 elements 1 stage (with lock up clutch)	
Transmission	Remote mounted full automatic 6 forward & 2 reverse speed with transfer differential	
Number of speeds	6 forward & 2 reverse speed	
Axles	Front	Planetary, drive/steer type
	Rear	Planetary, drive/steer type
Suspension	Front & Rear	Hydro-pneumatic suspension Hydraulic locking device with suspension cylinder
	Service brake	Air-over hydraulic disk brake on 4 wheels (front and rear independent circuit)
Brake system	Parking brake	Spring applied, electrically air released parking brake mounted on front axle, internal expanding type
	Auxiliary brake	Exhaust brake, Hydraulic retarder
Steering	Full hydraulic power steering Completely independent front and rear steering (with automatic rear wheel steering lock system)	
Tire size	Front	505 / 95 R25 183E ROAD
	Rear	505 / 95 R25 183E ROAD
Fuel tank capacity	300 L	
Batteries	(12V — 150AH) × 2	

● Safety devices

	Emergency steering device, Rear wheel steering lock system (automatic), Mis-shifting prevention system, Brake fluid leak warning device, Service brake lock, Suspension lock, Engine overspeed alarm, Radiator coolant level warning device, Air filter service warning device
--	--

● Standard equipment

	Centralized lubricating system, Bypass oil filter
--	---

● Optional equipments

	Yellow rev. light, Rear view camera, Side view camera
--	---

■ GENERAL Dimensions

Overall length	12,590mm	
Overall width	2,990mm	
Overall height	3,680mm	
Wheel base	5,300mm	
Treads	Front	2,410mm
	Rear	2,410mm
Passenger capacity	One person	
Gross vehicle mass	Gross weight	approx. 39,750kg
	Front weight	approx. 19,850kg
	Rear weight	approx. 19,900kg

- Stow the hooks in place before traveling.
- Before you use this machine, read the precautions in the instruction manual thoroughly to operate it correctly.
- KATO products and specifications are subject to improvements and changes without notice.

جرثقیل پارمیس

RATED LIFTING CAPACITY

Based on ISO 4305

10.0m — 44.5m Boom



(Unit : Metric ton)

(Unit : Metric ton)

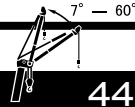
Working radius (m)	(7.6m)									
	Outriggers fully extended (7.6m) (over side and over rear)									
	10.0m Boom	16.9m Boom	23.8m Boom	30.7m Boom	37.6m Boom	41.5m Boom	44.5m Boom			
2.5	70.00*	32.00	23.00	12.50						
3.0	61.00*	32.00	23.00	12.50						
3.5	55.00*	32.00	23.00	12.50	12.00					
4.0	49.20*	32.00	23.00	12.50	12.00	10.00				
4.5	44.10	32.00	23.00	12.50	12.00	10.00	8.00			
5.0	39.50	32.00	23.00	12.50	12.00	10.00	8.00			
5.5	35.70	32.00	23.00	12.50	12.00	10.00	8.00			
6.0	32.50	30.50	22.00	12.50	12.00	10.00	8.00			
6.5	29.50	28.50	20.60	12.50	12.00	10.00	8.00			
7.0	26.80	26.00	19.30	12.50	12.00	10.00	8.00			
7.5		24.00	18.20	12.50	12.00	10.00	8.00			
8.0		22.00	17.20	12.50	12.00	10.00	8.00			
9.0		17.50	15.40	12.50	12.00	10.00	8.00			
10.0		14.00	13.80	12.50	10.90	10.00	8.00			
11.0		11.40	11.20	11.30	10.00	9.20	8.00			
12.0		9.40	9.20	10.30	9.20	8.40	8.00			
13.0		7.90	7.65	8.70	8.40	7.80	7.30			
14.0			6.40	7.40	7.80	7.20	6.80			
15.0			5.35	6.35	7.00	6.60	6.30			
16.0			4.50	5.45	6.10	6.20	5.80			
17.0			3.80	4.75	5.30	5.55	5.40			
18.0			3.15	4.10	4.65	4.90	5.00			
19.0			2.60	3.55	4.10	4.35	4.50			
20.0			2.15	3.05	3.60	3.85	4.00			
21.0				2.60	3.15	3.40	3.55			
22.0				2.25	2.75	3.00	3.15			
24.0				1.60	2.10	2.30	2.45			
26.0				1.05	1.55	1.75	1.90			
28.0					1.10	1.30	1.45			
30.0					0.75	0.95	1.05			
32.0						0.60	0.70			
33.0							0.55			
Critical boom angle	—	—	—	—	28°	33°	37°			
Standard hook	for 70/48 ton	for 34 ton								
Hook mass	530/470kg	330kg								
Parts of line	16*/10	7	5	4	4	4	4			

Working radius (m)	(7.2m)								(6.5m)									
	Outriggers intermediately extended (7.2m) (over side)								Outriggers intermediately extended (6.5m) (over side)									
	10.0m Boom	16.9m Boom	23.8m Boom	30.7m Boom	37.6m Boom	41.5m Boom	44.5m Boom		10.0m Boom	16.9m Boom	23.8m Boom	30.7m Boom	37.6m Boom	41.5m Boom	44.5m Boom			
2.5	48.00	32.00	23.00	12.50				48.00	32.00	23.00	12.50							
3.0	48.00	32.00	23.00	12.50				48.00	32.00	23.00	12.50							
3.5	48.00	32.00	23.00	12.50	12.00			46.00	32.00	23.00	12.50	12.00						
4.0	46.00	32.00	23.00	12.50	12.00	10.00		42.00	32.00	23.00	12.50	12.00	10.00					
4.5	42.00	32.00	23.00	12.50	12.00	10.00	8.00	38.00	32.00	23.00	12.50	12.00	10.00	8.00				
5.0	38.50	32.00	23.00	12.50	12.00	10.00	8.00	34.50	32.00	23.00	12.50	12.00	10.00	8.00				
5.5	35.00	32.00	23.00	12.50	12.00	10.00	8.00	31.50	32.00	23.00	12.50	12.00	10.00	8.00				
6.0	32.00	30.50	22.00	12.50	12.00	10.00	8.00	29.00	30.50	22.00	12.50	12.00	10.00	8.00				
6.5	29.50	28.50	20.60	12.50	12.00	10.00	8.00	25.00	25.80	20.60	12.50	12.00	10.00	8.00				
7.0	26.80	26.00	19.30	12.50	12.00	10.00	8.00	21.50	21.80	19.30	12.50	12.00	10.00	8.00				
7.5		23.10	18.20	12.50	12.00	10.00	8.00		18.80	18.20	12.50	12.00	10.00	8.00				
8.0		20.50	17.20	12.50	12.00	10.00	8.00		16.40	16.20	12.50	12.00	10.00	8.00				
9.0		16.00	15.40	12.50	12.00	10.00	8.00		12.90	12.70	12.50	12.00	10.00	8.00				
10.0		12.70	12.40	12.50	10.90	10.00	8.00		10.30	10.00	11.25	10.90	10.00	8.00				
11.0		10.30	10.10	11.10	10.00	9.20	8.00		8.40	8.10	9.30	9.80	9.20	8.00				
12.0		8.50	8.25	9.25	9.20	8.40	8.00		6.85	6.60	7.70	8.40	8.40	8.00				
13.0		7.10	6.85	7.80	8.40	7.80	7.30		5.65	5.40	6.45	7.10	7.20	7.30				
14.0			5.70	6.65	7.25	7.20	6.80			4.45	5.45	6.05	6.35	6.50				
15.0			4.75	5.65	6.30	6.55	6.30			3.60	4.60	5.20	5.45	5.60				
16.0			3.95	4.85	5.45	5.70	5.80			2.90	3.90	4.50	4.75	4.90				
17.0			3.30	4.15	4.75	5.00	5.15			2.35	3.30	3.85	4.10	4.25				
18.0			2.70	3.55	4.15	4.40	4.55			1.85	2.75	3.35	3.55	3.70				
19.0			2.20	3.05	3.60	3.85	4.00			1.40	2.30	2.85	3.10	3.25				
20.0			1.75	2.60	3.15	3.40	3.50			1.00	1.90	2.45	2.70	2.80				
21.0				2.20	2.75	2.95	3.10				1.55	2.10	2.30	2.45				
22.0				1.85	2.40	2.60	2.75				1.25	1.75	2.00	2.10				
24.0				1.25	1.75	1.95	2.10				0.70	1.20	1.45	1.55				
26.0				0.75	1.25	1.45	1.60					0.75	0.95	1.10				
28.0					0.85	1.05	1.15						0.60	0.70				
30.0						0.65	0.80											
31.0							0.65											
Critical boom angle	—	—	—	—	35°	38°	41°	—	—	—	25°	40°	43°	47°				
Standard hook	for 48 ton	for 34 ton							for 48 ton	for 34 ton								
Hook mass	470kg	330kg							470kg	330kg								
Parts of line	10	7	5	4	4	4	4	10	7	5	4	4	4	4				

(Unit : Metric ton)

(Unit : Metric ton)

Working radius (m)	(5.4m)								(4.3m)								(2.69m)			
	Outriggers intermediately extended (5.4m) (over side)								Outriggers intermediately extended (4.3m) (over side)								Outriggers completely retracted (blocked on vertical cylinders) (over side)			
	10.0m Boom	16.9m Boom	23.8m Boom	30.7m Boom	37.6m Boom	41.5m Boom	44.5m Boom		10.0m Boom	16.9m Boom	23.8m Boom	30.7m Boom	37.6m Boom	41.5m Boom	44.5m Boom	10.0m Boom	16.9m Boom	23.8m Boom		
2.5	48.00	32.00	23.00	12.50				38.00	30.00	23.00	12.50				20.00	15.00	12.00			
3.0	48.00	32.00	23.00	12.50				38.00	30.00	23.00	12.50				20.00	15.00	12.00			
3.5	46.00	32.00	23.00	12.50	12.00			38.00	30.00	23.00	12.50	12.00			18.00	15.00	12.00			
4.0	42.00	32.00	23.00	12.50	12.00	10.00		31.00	29.60	23.00	12.50	12.00	10.00		14.00	13.70	12.00			
4.5	38.00	32.00	23.00	12.50	12.00	10.00	8.00	24.00	24.30	20.80	12.50	12.00	10.00	8.00	11.30	11.00	9.90			
5.0	32.20	30.60	23.00	12.50	12.00	10.00	8.00	20.00	19.40	17.60	12.50	12.00	10.00	8.00	9.30	9.00	8.30			
5.5	25.90	25.20	22.40	12.50	12.00	10.00	8.00	16.50	16.00	15.10	12.50	12.00	10.00	8.00	7.80	7.40	7.00			
6.0	21.50	20.90	19.30	12.50	12.00	10.00	8.00	13.90	13.40	13.00	12.50	12.00	10.00	8.00	6.60	6.50	5.90			
6.5	18.20	17.60	16.90	12.50	12.00	10.00	8.00	11.90	11.40	11.30	11.60	11.50	10.00	8.00	5.60	5.20	5.00			
7.0	15.70	15.10	14.80	12.50	12.00	10.00	8.00	10.40	9.80	9.70	10.40	10.35	10.00	8.00	4.80	4.40	4.20			
7.5		13.10	12.90	12.50	12.00	10.00	8.00		8.60	8.40	9.30	9.30	9.20	8.00		3.70	3.50			
8.0		11.50	11.30	12.10	11.90	10.00	8.00		7.50	7.30	8.30	8.40	8.40	8.00		3.20	2.90			
9.0		9.00	8.80	9.95	10.00	9.90	8.00		5.80	5.60	6.60	6.95	7.00	7.00		2.15				
10.0		7.20	7.00	8.05	8.45	8.45	8.00		4.60	4.40	5.30	5.80	5.85	5.90		1.25				
11.0		5.80	5.55	6.65	7.15	7.25	7.25		3.50	3.30	4.30	4.80	4.90	4.95						
12.0		4.60	4.40	5.45	6.05	6.20	6.25		2.65	2.45	3.45	4.00	4.15	4.20						
13.0		3.70	3.50	4.50	5.10	5.35	5.40		1.95	1.70	2.70	3.30	3.50	3.55						
14.0			2.70	3.70	4.30	4.55	4.70			1.00	2.10	2.70	2.90	3.00						
15.0			2.10	3.05	3.60	3.85	4.00				1.55	2.15	2.40	2.50						
16.0			1.55	2.50	3.05	3.30	3.45				1.10	1.70	1.95	2.10						
17.0			1.10	2.00	2.55	2.80	2.90				1.30	1.55	1.70							
18.0			0.70	1.60	2.10	2.35	2.50													
19.0				1.20	1.75	1.95	2.10													
20.0				0.90	1.40	1.60	1.75													
21.0				0.60	1.10	1.30	1.45													
22.0					0.85	1.05	1.20													
Critical boom angle	—	—	30°	40°	50°	54°	57°	—	—	46°	53°	60°	63°	65°	—	40°	64°			
Standard hook	for 48 ton	for 34 ton							for 48 ton	for 34 ton							for 48 ton	for 34 ton		
Hook mass	470kg																			



44.5m Boom + 8.3m SLJib

Outriggers fully extended (7.6m) (over side and over rear)

Boom angle (°)	Offset 7°		Offset 25°		Offset 45°		Offset 60°	
	Working radius (m)	Load (ton)	Working radius (m)	Load (ton)	Working radius (m)	Load (ton)	Working radius (m)	Load (ton)
84	5.8	4.00	8.6	3.00	10.4	1.90	11.2	1.00
80	10.3	4.00	12.8	3.00	14.4	1.90	14.7	1.00
77	13.4	4.00	15.8	3.00	17.0	1.85	17.3	1.00
75	15.5	4.00	17.5	3.00	18.7	1.80	19.0	1.00
73	17.3	3.70	19.3	2.75	20.3	1.75	20.7	1.00
70	19.9	3.20	21.8	2.45	22.8	1.65	23.1	1.00
68	21.7	2.90	23.5	2.25	24.5	1.60	24.6	1.00
65	24.1	2.30	25.8	2.05	26.8	1.55	26.8	1.00
63	25.7	1.80	27.3	1.70	28.3	1.50	28.2	1.00
60	27.7	1.35	29.4	1.20	30.3	1.15		
57	29.8	0.90	31.4	0.80	32.3	0.75		
54	31.8	0.55	33.4	0.45	34.0	0.45		
Critical boom angle	53°		53°		53°		62°	
Standard hook	for 5 ton (Hook mass : 120kg)							
Parts of line	1							

Outriggers intermediately extended (7.2m) (over side)

Boom angle (°)	Offset 7°		Offset 25°		Offset 45°		Offset 60°	
	Working radius (m)	Load (ton)	Working radius (m)	Load (ton)	Working radius (m)	Load (ton)	Working radius (m)	Load (ton)
84	5.8	4.00	8.6	3.00	10.4	1.90	11.2	1.00
80	10.3	4.00	12.8	3.00	14.4	1.90	14.7	1.00
77	13.4	4.00	15.8	3.00	17.0	1.85	17.3	1.00
75	15.5	4.00	17.5	3.00	18.7	1.80	19.0	1.00
73	17.3	3.70	19.3	2.75	20.3	1.75	20.7	1.00
70	19.9	3.20	21.8	2.45	22.8	1.65	23.1	1.00
68	21.7	2.80	23.5	2.25	24.5	1.60	24.6	1.00
65	23.8	2.10	25.7	1.85	26.8	1.55	26.8	1.00
63	25.3	1.65	27.1	1.45	28.2	1.40	28.2	1.00
60	27.5	1.10	29.3	1.00	30.2	0.95		
57	29.6	0.70	31.3	0.60	32.2	0.55		
Critical boom angle	56°		56°		56°		62°	
Standard hook	for 5 ton (Hook mass : 120kg)							
Parts of line	1							

Outriggers intermediately extended (6.5m) (over side)

Boom angle (°)	Offset 7°		Offset 25°		Offset 45°		Offset 60°	
	Working radius (m)	Load (ton)	Working radius (m)	Load (ton)	Working radius (m)	Load (ton)	Working radius (m)	Load (ton)
84	5.8	4.00	8.6	3.00	10.4	1.90	11.2	1.00
80	10.3	4.00	12.8	3.00	14.4	1.90	14.7	1.00
77	13.4	4.00	15.8	3.00	17.0	1.85	17.3	1.00
75	15.5	4.00	17.5	3.00	18.7	1.80	19.0	1.00
73	17.3	3.70	19.3	2.75	20.3	1.75	20.7	1.00
70	19.7	2.90	21.8	2.45	22.8	1.65	23.1	1.00
68	21.2	2.35	23.3	2.00	24.5	1.60	24.6	1.00
65	23.5	1.60	25.5	1.40	26.7	1.30	26.8	1.00
63	25.0	1.20	27.0	1.00	28.1	0.95	28.2	1.00
60	27.2	0.65	29.1	0.60	30.1	0.55		
Critical boom angle	59°		59°		59°		62°	
Standard hook	for 5 ton (Hook mass : 120kg)							
Parts of line	1							

Outriggers intermediately extended (5.4m) (over side)

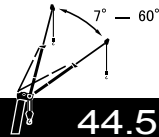
Boom angle (°)	Offset 7°		Offset 25°		Offset 45°		Offset 60°	
	Working radius (m)	Load (ton)	Working radius (m)	Load (ton)	Working radius (m)	Load (ton)	Working radius (m)	Load (ton)
84	5.8	4.00	8.6	3.00	10.4	1.90	11.2	1.00
80	10.3	4.00	12.8	3.00	14.4	1.90	14.7	1.00
77	13.4	4.00	15.8	3.00	17.0	1.85	17.3	1.00
75	15.1	3.60	17.5	3.00	18.7	1.80	19.0	1.00
73	16.7	3.00	19.0	2.55	20.3	1.75	20.7	1.00
70	19.1	2.10	21.4	1.65	22.7	1.55	23.1	1.00
68	20.7	1.50	23.0	1.20	24.3	1.10	24.6	1.00
Critical boom angle	67°		67°		67°		67°	
Standard hook	for 5 ton (Hook mass : 120kg)							
Parts of line	1							

Outriggers intermediately extended (4.3m) (over side)

Boom angle (°)	Offset 7°		Offset 25°		Offset 45°		Offset 60°	
	Working radius (m)	Load (ton)	Working radius (m)	Load (ton)	Working radius (m)	Load (ton)	Working radius (m)	Load (ton)
84	5.8	4.00	8.6	3.00	10.4	1.90	11.2	1.00
80	10.3	4.00	12.8	3.00	14.4	1.90	14.7	1.00
77	13.0	3.40	15.8	2.55	17.0	1.85	17.3	1.00
75	14.8	2.45	17.2	2.00	18.7	1.70	19.0	1.00
73	16.5	1.75	18.8	1.40	20.3	1.30	20.7	1.00
Critical boom angle	72°		72°		72°		72°	
Standard hook	for 5 ton (Hook mass : 120kg)							
Parts of line	1							

Outriggers extended (over front)

Boom angle (°)	Offset 7°		Offset 25°		Offset 45°		Offset 60°	
	Working radius (m)	Load (ton)	Working radius (m)	Load (ton)	Working radius (m)	Load (ton)	Working radius (m)	Load (ton)
84	5.8	4.00	8.6	3.00	10.4	1.90	11.2	1.00
80	10.3	4.00	12.8	3.00	14.4	1.90	14.7	1.00
77	13.4	4.00	15.8	3.00	17.0	1.85	17.3	1.00
75	15.5	4.00	17.5	3.00	18.7	1.80	19.0	1.00
73	17.3	3.70	19.3	2.75	20.3	1.75	20.7	1.00
70	19.9	3.20	21.8	2.45	22.8	1.65	23.1	1.00
68	21.7	2.90	23.5	2.25	24.5	1.60	24.6	1.00
65	24.1	2.45	25.8	2.05	26.8	1.55	26.8	1.00
63	25.7	2.25	27.4	1.90	28.3	1.50	28.2	1.00
60	27.9	1.75	29.6	1.60	30.3	1.45		
57	30.0	1.30	31.7	1.15	32.3	1.15		
54	32.0	0.90	33.6	0.80	34.0	0.80		
49	35.2	0.40	36.5	0.35	37.0	0.35		
Critical boom angle	48°		48°		48°		62°	
Standard hook	for 5 ton (Hook mass : 120kg)							
Parts of line	1							



44.5m Boom + 13.2m SLJib

Outriggers fully extended (7.6m) (over side and over rear)

Boom angle (°)	Offset 7°		Offset 25°		Offset 45°		Offset 60°	
	Working radius (m)	Load (ton)	Working radius (m)	Load (ton)	Working radius (m)	Load (ton)	Working radius (m)	Load (ton)
84	7.2	2.50	11.0	1.50	14.3	1.00	15.7	0.60
80	11.8	2.50	15.5	1.50	18.2	1.00	19.5	0.60
77	15.3	2.50	18.6	1.50	21.0	1.00	22.2	0.60
75	17.5	2.50	20.6	1.50	22.9	1.00	23.8	0.60
73	19.6	2.50	22.5	1.45	24.8	1.00	25.4	0.60
70	22.5	2.20	25.2	1.40	27.3	1.00	27.8	0.60
68	24.5	2.05	27.0	1.35	29.0	1.00	29.4	0.60
65	27.2	1.85	29.6	1.30	31.4	1.00	31.5	0.60
63	28.9	1.50	31.2	1.25	32.9	0.95	32.9	0.60
60	31.2	1.05	33.6	0.95	35.3	0.90		
58	32.5	0.85	35.2	0.70	36.5	0.70		
55	34.5	0.55	37.2	0.40	38.3	0.40		
Critical boom angle	54°		54°		54°		62°	
Standard hook	for 5 ton (Hook mass : 120kg)							
Parts of line	1							

Outriggers intermediately extended (7.2m) (over side)

Boom angle (°)	Offset 7°		Offset 25°		Offset 45°		Offset 60°	
	Working radius (m)	Load (ton)	Working radius (m)	Load (ton)	Working radius (m)	Load (ton)	Working radius (m)	Load (ton)
84	7.2	2.50	11.0	1.50	14.3	1.00	15.7	0.60
80	11.8	2.50	15.5	1.50	18.2	1.00	19.5	0.60
77	15.3	2.50	18.6	1.50	21.0	1.00	22.2	0.60
75	17.5	2.50	20.6	1.50	22.9	1.00	23.8	0.60
73	19.6	2.50	22.5	1.45	24.8	1.00	25.4	0.60
70	22.5	2.20	25.2	1.40	27.3	1.00	27.8	0.60
68	24.5	2.05	27.0	1.35	29.0	1.00	29.4	0.60
65	27.1	1.65	29.6	1.30	31.4	1.00	31.5	0.60
63	28.7	1.30	31.1	1.20	32.9	0.95	32.9	0.60
60	31.0	0.85	33.4	0.80	34.9	0.75		
58	32.3	0.65	34.9	0.55	36.2	0.45		
Critical boom angle	57°		57°		57°		62°	
Standard hook	for 5 ton (Hook mass : 120kg)							
Parts of line	1							

Outriggers intermediately extended (6.5m) (over side)

Boom angle (°)	Offset 7°		Offset 25°		Offset 45°		Offset 60°	
	Working radius (m)	Load (ton)	Working radius (m)	Load (ton)	Working radius (m)	Load (ton)	Working radius (m)	Load (ton)
84	7.2	2.50	11.0	1.50	14.3	1.00	15.7	0.60
80	11.8	2.50	15.5	1.50	18.2	1.00	19.5	0.60
77	15.3	2.50	18.6	1.50	21.0	1.00	22.2	0.60
75	17.5	2.50	20.6	1.50	22.9	1.00	23.8	0.60
73	19.6	2.50	22.5	1.45	24.8	1.00	25.4	0.60
70	22.5	2.20	25.2	1.40	27.3	1.00	27.8	0.60
68	24.2	1.80	27.0	1.35	29.0	1.00	29.4	0.60
65	26.6	1.25	29.4	1.10	31.4	1.00	31.5	0.60
63	28.3	0.90	31.0	0.80	32.7	0.70	32.9	0.60
Critical boom angle	62°		62°		62°		62°	
Standard hook	for 5 ton (Hook mass : 120kg)							
Parts of line	1							

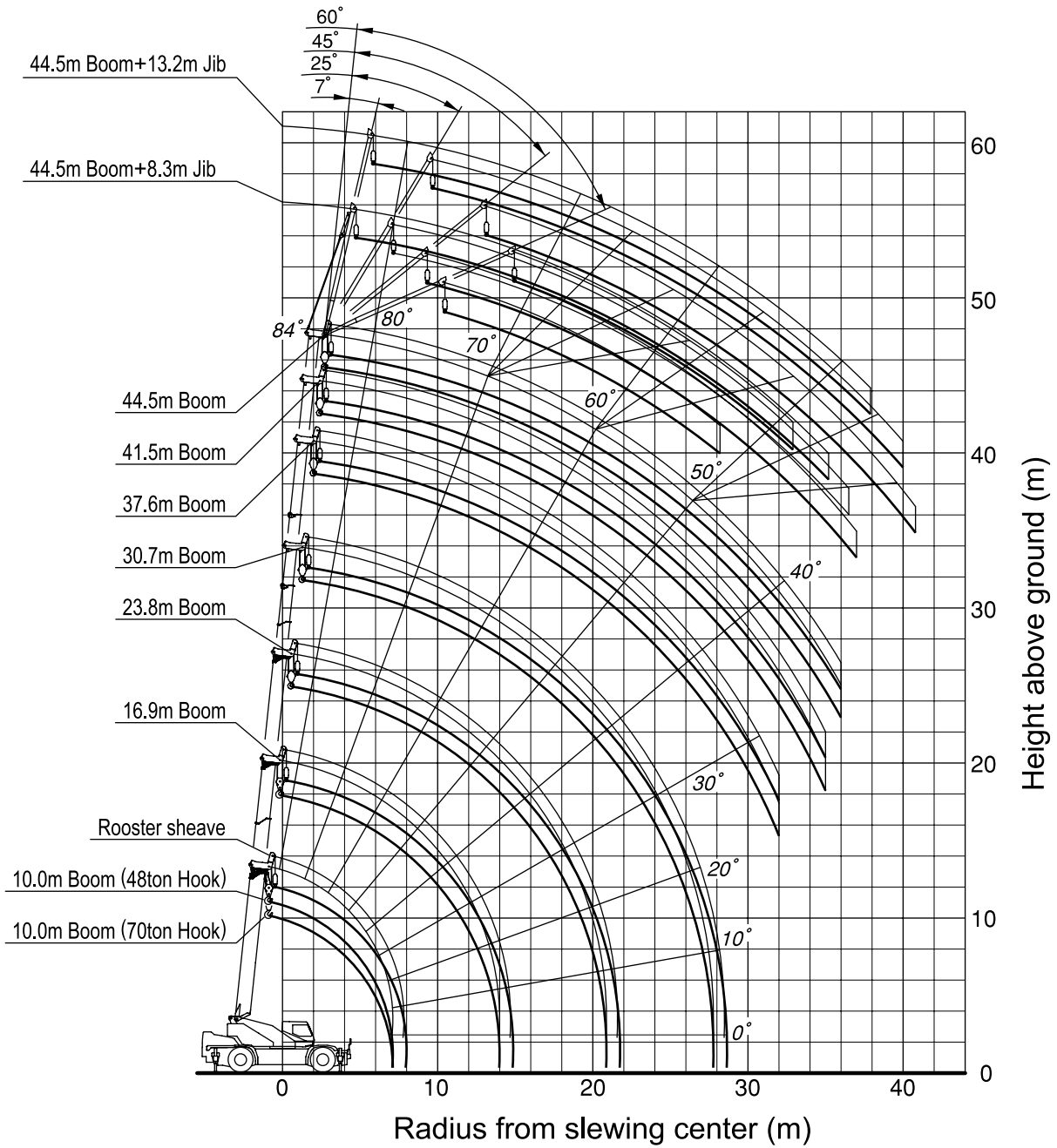
Outriggers intermediately extended (5.4m) (over side)

Boom angle (°)	Offset 7°		Offset 25°		Offset 45°		Offset 60°	
	Working radius (m)	Load (ton)	Working radius (m)	Load (ton)	Working radius (m)	Load (ton)	Working radius (m)	Load (ton)
84	7.2	2.50	11.0	1.50	14.3	1.00	15.7	0.60
80	11.8	2.50	15.5	1.50	18.2	1.00	19.5	0.60
77	15.3	2.50	18.6	1.50	21.0	1.00	22.2	0.60
75	17.5	2.50	20.6	1.50	22.9	1.00	23.8	0.60
73	19.5	2.35	22.5	1.45	24.8	1.00	25.4	0.60
70	22.0	1.60	25.0	1.30	27.3	1.00	27.8	0.60
68	23.5	1.20	26.8	0.90	28.9	0.85	29.4	0.60
Critical boom angle	67°		67°		67°		67°	
Standard hook	for 5 ton (Hook mass : 120kg)							
Parts of line	1							

Outriggers intermediately extended (4.3m) (over side)

Boom angle (°)	Offset 7°		Offset 25°		Offset 45°		Offset 60°	
	Working radius (m)	Load (ton)	Working radius (m)	Load (ton)	Working radius (m)	Load (ton)	Working radius (m)	Load (ton)
84	7.2	2.50	11.0	1.50	14.3	1.00	15.7	0.60
80	11.8	2.50	15.5	1.50	18.2	1.00	19.5	0.60
77	15.3	2.50	18.6	1.50	21.0	1.00	22.2	0.60
75	17.0	2.00	20.6	1.50	22.9	1.00	23.8	0.60
73	18.8	1.40	22.3	1.10	24.6	1.00	25.4	0.60</

WORKING RANGE



Note:

1. This diagram does not include deflection of Boom and Fly jib.
2. The outriggers are extended (over front).

جرثقیل پارمیس

بابک پناہر نیا ۵۰۵۵-۲۴۸-۰۹۱۲