

KATO BOOM LIFTING CAPACITIES

Based on ISO 4305
Not exceed 75% of static tipping loads

(Unit: Metric ton)

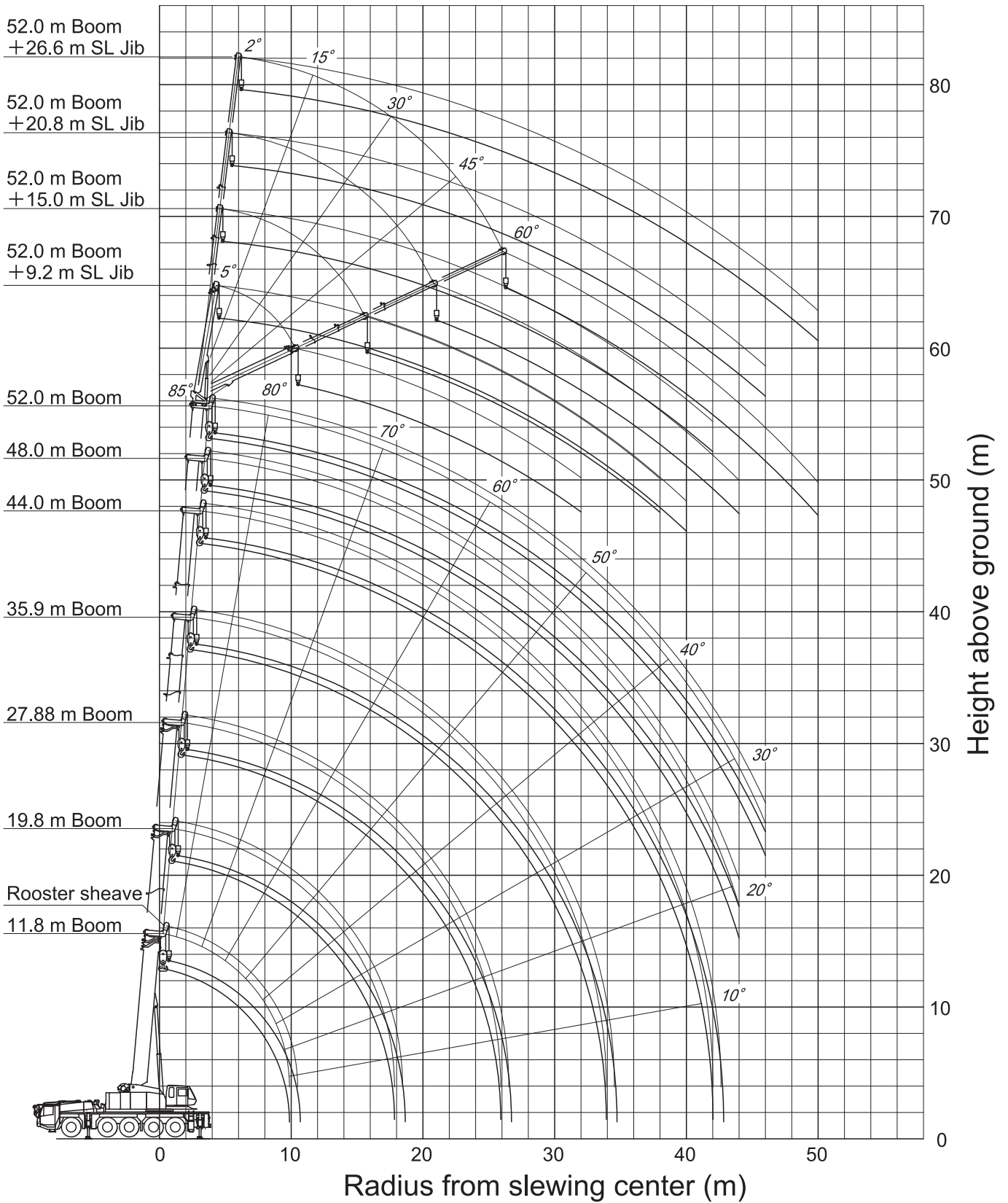
Specification A1 Outriggers fully extended (8.4 m) - 360° full range, with counterweight								
Working radius (m)	11.8 m Boom Heavy Load Unit	11.8 m Boom	19.8 m Boom	27.88 m Boom	35.9 m Boom	44.0 m Boom	48.0 m Boom	52.0 m Boom
2.5	130.0	70.0						
3.0	120.0	70.0	50.0					
3.5	110.0	70.0	50.0					
4.0	101.0	70.0	50.0	35.0				
4.5	89.0	70.0	50.0	35.0				
5.0	79.5	70.0	50.0	35.0	24.0			
6.0	64.5	64.5	50.0	35.0	24.0			
7.0	54.0	54.0	50.0	35.0	24.0	17.0	14.0	
8.0	46.0	46.0	46.0	35.0	24.0	17.0	14.0	12.0
9.0	40.0	40.0	40.0	35.0	24.0	17.0	14.0	12.0
10.0			35.5	33.7	24.0	17.0	14.0	12.0
12.0			27.6	27.6	23.2	17.0	14.0	12.0
14.0			21.0	20.9	20.7	15.8	14.0	12.0
16.0			16.4	16.3	18.0	14.0	14.0	12.0
18.0				13.0	14.6	12.6	13.1	12.0
20.0				10.3	12.0	11.5	11.7	11.0
22.0				8.1	9.9	10.5	10.4	9.8
24.0				6.4	8.1	9.2	9.3	8.8
26.0					6.7	7.7	8.1	7.9
28.0					5.4	6.5	6.8	7.1
30.0					4.4	5.4	5.8	6.1
32.0					3.5	4.5	4.9	5.2
34.0						3.7	4.1	4.4
36.0						3.1	3.4	3.7
38.0						2.5	2.8	3.1
40.0						1.9	2.3	2.5
42.0						1.4	1.8	2.1
44.0							1.3	1.6
46.0								1.1
Critical boom angle (°)	—	—	—	—	—	—	16	22
Parts of line	19	10	7	5	4	4	4	4
Standard hook	for 130t	for 70t	for 50t	for 50t	for 50t	for 50t	for 50t	for 50t
Hook mass (t)	1.3	0.9	0.6	0.6	0.6	0.6	0.6	0.6

(Unit: Metric ton)

Specification B1 Outriggers fully extended (8.4 m) - 360° full range, with counterweight stowed in carrier								
Working radius (m)	11.8 m Boom Heavy Load Unit	11.8 m Boom	19.8 m Boom	27.88 m Boom	35.9 m Boom	44.0 m Boom	48.0 m Boom	52.0 m Boom
2.5	103.0	70.0						
3.0	103.0	70.0	50.0					
3.5	94.1	70.0	50.0					
4.0	86.3	70.0	50.0	35.0				
4.5	77.4	70.0	50.0	35.0				
5.0	68.7	70.0	50.0	35.0	24.0			
6.0	55.6	60.2	50.0	35.0	24.0			
7.0	46.2	50.2	46.5	35.0	24.0	17.0	14.0	
8.0	39.2	42.8	39.5	35.0	24.0	17.0	14.0	12.0
9.0	33.7	37.0	34.1	33.9	24.0	17.0	14.0	12.0
10.0			29.7	29.5	24.0	17.0	14.0	12.0
12.0			22.3	22.2	23.2	17.0	14.0	12.0
14.0			15.5	15.4	17.5	15.8	14.0	12.0
16.0			11.1	11.1	13.0	14.0	14.0	12.0
18.0				8.1	9.9	11.0	11.3	11.6
20.0				5.7	7.6	8.6	9.0	9.3
22.0				3.8	5.8	6.9	7.2	7.5
24.0				2.4	4.3	5.4	5.8	6.1
26.0					3.0	4.1	4.5	4.8
28.0					2.0	3.1	3.5	3.8
30.0					1.2	2.3	2.6	2.9
32.0						1.5	1.9	2.2
34.0							1.3	1.6
Critical boom angle (°)	—	—	—	—	28	39	43	47
Parts of line	19	10	7	5	4	4	4	4
Standard hook	for 130t	for 70t	for 50t	for 50t	for 50t	for 50t	for 50t	for 50t
Hook mass (t)	1.3	0.9	0.6	0.6	0.6	0.6	0.6	0.6

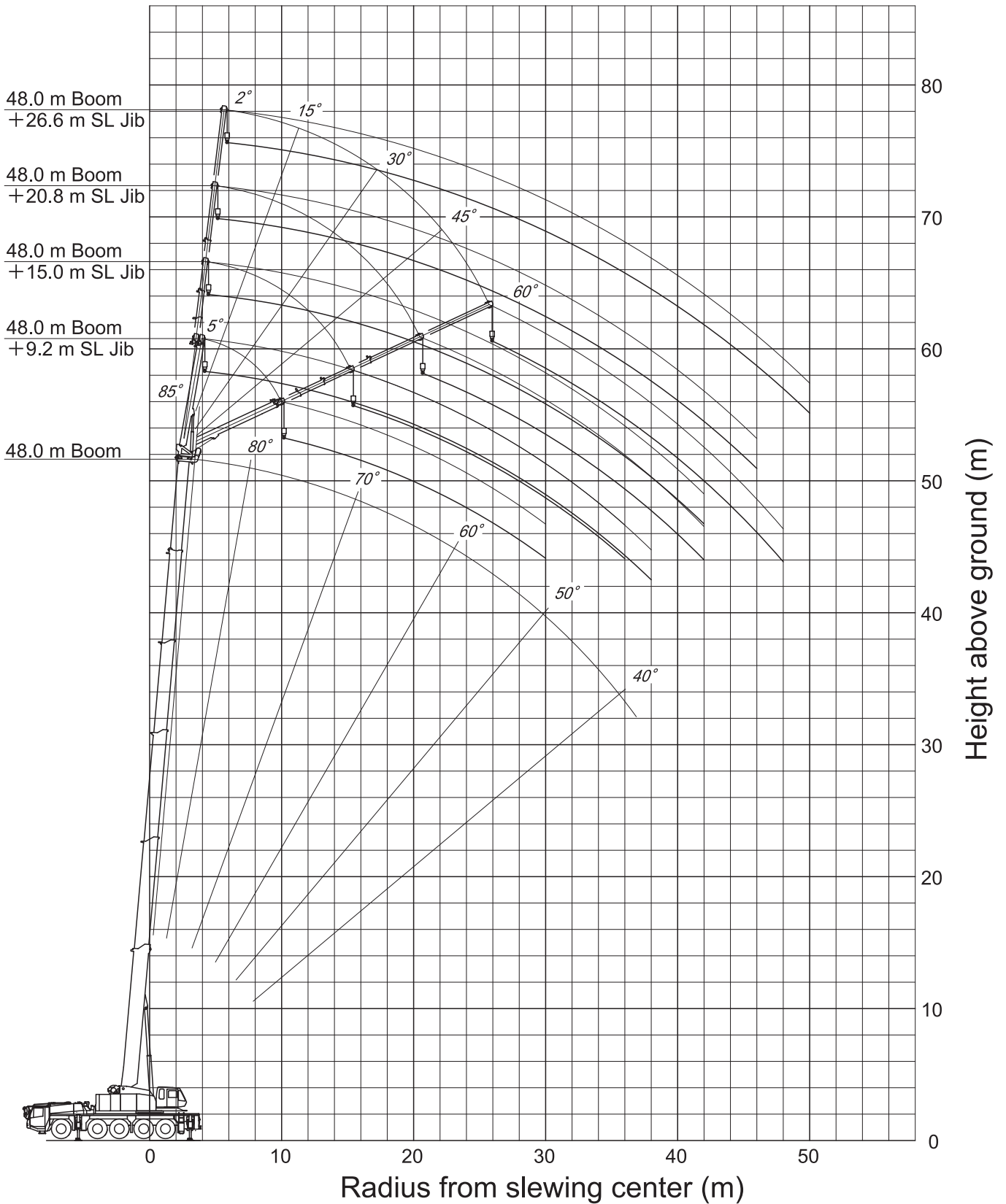
جرتقیل پارمیس

Super Luffing Jib (SL Jib) WORKING RANGE [52.0 m Boom + 9.2 m - 26.6 m SL Jib]



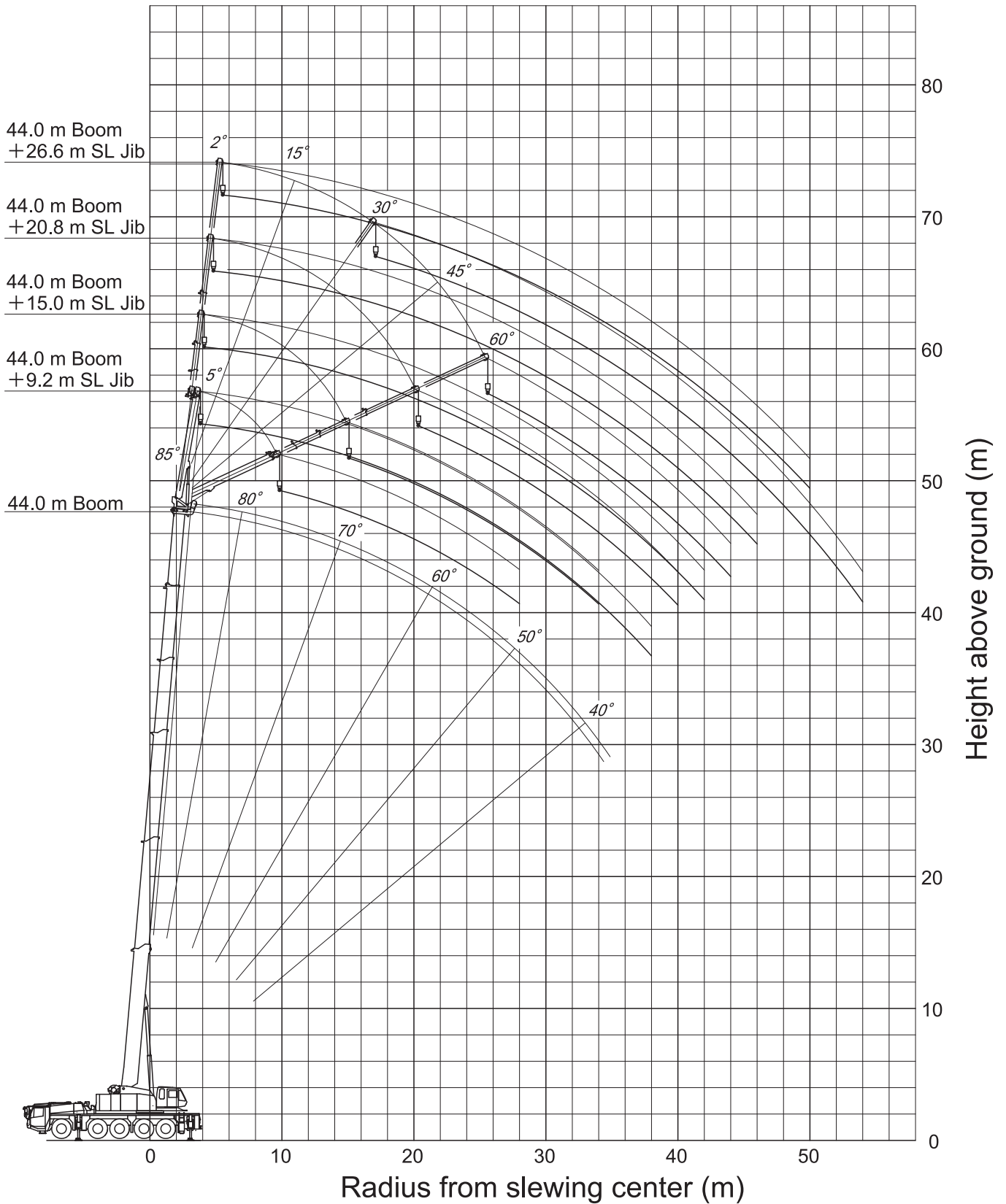
Notes: 1. This diagram does not include deflection of Boom and SL jib.
2. This diagram is for Specification A1.

Super Luffing Jib (SL Jib) WORKING RANGE [48.0 m Boom + 9.2 m - 26.6 m SL Jib]



Notes: 1. This diagram does not include deflection of Boom and SL jib.
2. This diagram is for Specification A1.

Super Luffing Jib (SL Jib) WORKING RANGE [44.0 m Boom + 9.2 m - 26.6 m SL Jib]



- Notes: 1. This diagram does not include deflection of Boom and SL jib.
2. This diagram is for Specification A1.

بابت پناہرنیا ۵۵۵-۲۴۸-۰۹۱۲