

## RATED CAPACITY

30 Tonnes at 3m radius

1 Tonne at 26m

Gross Vehicle Weight

29,200kg

## TAIL SWING

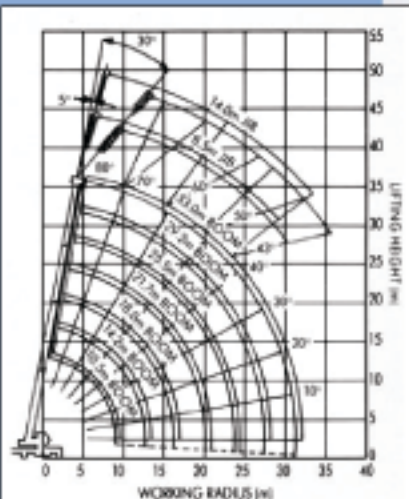
Radius 3,350 metres

# TG300E

## 30 Tonne Truck Crane

Max. Lifting Capacity: **30.0 metric tonne at 3.0m**

Max boom Length: **47m**



NOTE: The above lifting heights and boom angles are based on a straight (unloaded) boom, and allowance should be made for boom deflection obtained under load conditions.

Outriggers fully extended with front jack (360°)

B	A	Outriggers fully extended with front jack (360°)												
		L <sup>1</sup>	10.5m	L <sup>1</sup>	14.2m	L <sup>1</sup>	18.0m	L <sup>1</sup>	21.7m	L <sup>1</sup>	25.5m	L <sup>1</sup>	29.9m	L <sup>1</sup>
3.0m	66	36,000	73	20,000	77	16,000								
3.5m	63	25,400	71	20,000	75	16,000	78	12,000						
4.0m	60	22,900	69	20,000	74	16,000	77	12,000	79	11,500				
4.5m	57	21,000	67	20,000	72	16,000	75	12,000	78	11,500				
5.0m	53	19,400	64	13,400	70	16,000	74	12,000	77	11,500	79	9,000		
5.5m	50	17,700	62	16,300	69	14,750	73	12,000	76	11,500	78	9,000	80	7,000
6.0m	45	16,200	60	15,300	67	13,700	72	12,000	75	11,500	77	9,000	79	7,000
7.0m	38	13,300	55	12,650	63	11,950	69	11,000	72	10,000	75	9,000	77	7,000
8.0m	27	11,000	49	11,000	59	10,500	65	10,200	70	8,900	73	8,200	75	7,000
9.0m			44	9,000	55	9,000	63	9,200	68	8,050	71	7,450	74	6,250
10.0m			37	7,300	51	7,300	60	7,700	65	7,300	69	6,750	72	5,700
12.0m			19	5,050	42	5,050	53	5,450	60	5,700	65	5,650	68	4,800
14.0m					31	3,600	45	4,000	54	4,250	60	4,400	64	4,100
16.0m					12	2,500	38	2,950	48	3,200	55	3,400	60	3,450
18.0m							27	2,200	42	2,450	50	2,650	56	2,800
20.0m							9	1,550	34	1,850	44	2,050	51	2,200
22.0m									24	1,350	38	1,550	47	1,750
24.0m											31	1,200	41	1,350
26.0m											21	850	36	1,000